



# INSTALLATION GUIDE

Copyright © 2009 – Forex Knight Rider EA, All Rights Reserved  
Version 1.0 – December 2009



# **Disclaimer and Risk Warnings**

Trading any financial market involves risk. The content of this e-book, its various associated websites and all related correspondence are neither a solicitation nor an offer to purchase or sell any financial instrument.

Although every attempt has been made to assure accuracy, we do not give any express or implied warranty as to its accuracy. We do not accept any liability for error or omission. Examples are provided for illustrative and educational purposes only and should not be construed as investment advice or strategy.

No representation is being made that any account or trader will or is likely to achieve profits or losses similar to those discussed in this e-book. Past performance is not indicative of future results.

By purchasing the software, subscribing to our mailing list or using the website you will be deemed to have accepted these terms in full.

The Broker-Nightmare's publishers, their representatives and associates do not and cannot give investment advice.

We endeavour to insure that related websites are available 24 hours per day but we cannot be held liable if, for any reason, a site is unavailable. The information provided in this e-book is not intended for distribution to, or for use by, any person or entity in any jurisdiction or country where such distribution or use would be contrary to law or regulation or which would subject us to any registration requirement within such jurisdiction or country.

Hypothetical performance results have many inherent limitations, some of which are mentioned below. No representation is being made that any account will or is likely to achieve profits or losses similar to those shown. In fact, there are frequently sharp differences between hypothetical performance results and actual results subsequently achieved by any particular trading program.

One of the limitations of hypothetical performance results is that they are generally prepared with the benefit of hindsight. In addition, hypothetical trading does not involve financial risk and no hypothetical trading record can completely account for the impact of financial risk in actual trading.

For example: the ability to withstand losses or to adhere to a particular trading program in spite of trading losses are material points which can also adversely affect trading results. There are numerous other factors related to the market in general and to the implementation of any specific trading program, which cannot be fully accounted for in the preparation of hypothetical performance results, all of which can adversely affect actual trading results.

We reserve the right to change these terms and conditions without notice. You can check for updates to this disclaimer at any time without notification.

The content of this e-book and all related websites and correspondence are copyright and may not be copied or reproduced.

# **Copyright Information**

Reproduction and or translation of any part of this work by any means electronic or mechanical including photocopying beyond that permitted by copyright law without the prior written permission of the publisher is unlawful and strictly prohibited.

## **U.S. Government Required Disclaimer**

Commodity Futures Trading Commission Futures and Options trading have large potential rewards, but also large potential risk. You must be aware of the risks and be willing to accept them in order to invest in the FOREX, futures and options markets. The past performance of any trading system or methodology is not necessarily indicative of future results.

# INTRODUCTION

You've just purchased a unique and revolutionary automated trading robot  
The Knight Rider

This trading robot (also known as an "Expert Advisor" or "**EA**" for short) will analyze and trade the Forex market for you, 100% automatically. It is quick and easy to install, as you'll see in a minute.

## ***IMPRESSIVE FEATURES INCLUDE:***

- ✓ 100% automatic hands-free trading.
- ✓ Watches the markets for you 24 hours each and every day.
- ✓ Profitable trading without any hassles or emotional issues.
- ✓ Eliminates destructive emotions of greed and fear.
- ✓ Easy to use: quickly install and trade.
- ✓ One Time Payment - Updates included - No monthly fee.
- ✓ Built in unique and sophisticated Money Management.
- ✓ Works on any account type, standard and mini accounts
- ✓ Features Ground Breaking FKR 'Scalping' Technology
- ✓ Works On All Brokers (ECN Compatible)
- ✓ 96.67% ratio on automatic winning trades. (DAILY TRADING)

**Please Read The Instructions Carefully  
Before You Attempt To Operate The**

***KNIGHT RIDER!***

# **TABLE OF CONTENTS**

**HOW TO DOWNLOAD & INSTALL  
METATRADER 4**

**HOW TO OPEN A DEMO ACCOUNT**

**HOW TO INSTALL KNIGHT RIDER**

**HOW TO USE KNIGHT RIDER**

**SETTING UP FOR TRADING**

**TROUBLESHOOTING**

**FREQUENTLY ASKED QUESTIONS (FAQ)**

# **HOW TO DOWNLOAD & INSTALL**

## **METATRADER 4**

The **KNIGHT RIDER** robot requires the “MetaTrader 4” trading platform which is freely available here:

**[CLICK HERE TO DOWNLOAD METATRADER](#)**

### MetaTrader 4 Client Terminal



**MetaTrader 4 Client Terminal** has a user-friendly front-end trading interface. It provides technical analysis, charting and Expert Advisors to help you develop your own trading strategies.

It is also distinguished for its wide range of functionalities that accommodate the demands of all traders.

- [Download client terminal \(3Mb\) and open demo-account](#)
- [Read User Guide](#)

### Downloads

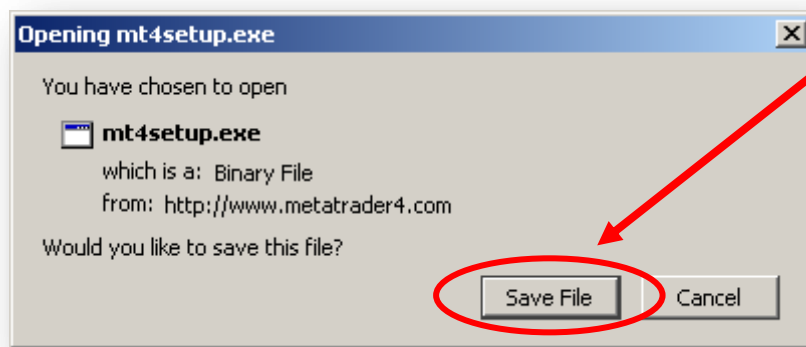
We would like to bring to your attention our MetaTrader 4 Client Terminal and MetaTrader 4 Mobile.



**MetaTrader 4  
Client Terminal**  
(Windows 98, ME, XP, 2000)

**[Download MetaTrader](#)**

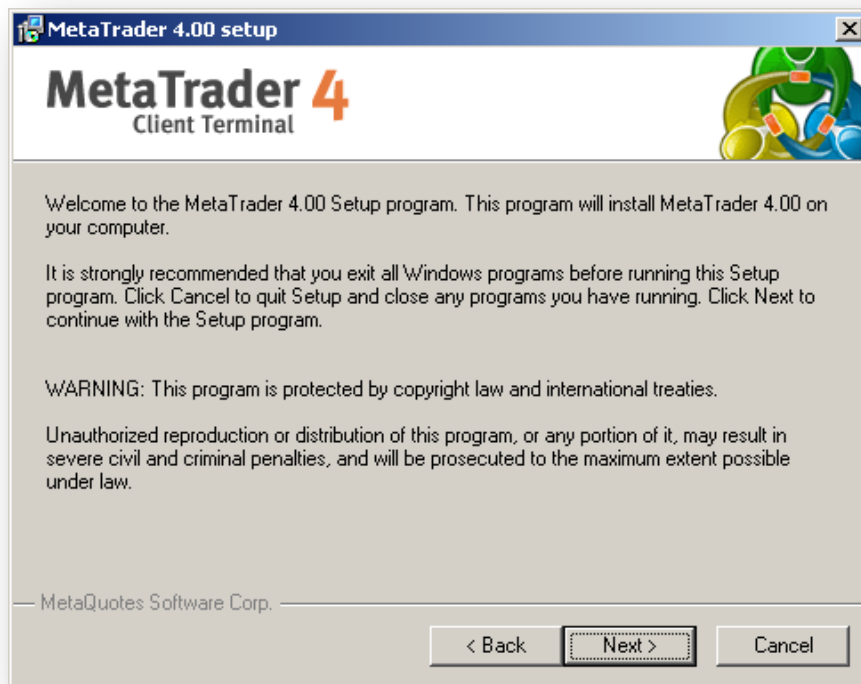
Download the installation file ([mt4setup.exe](#), 3.5Mb) to your PC, launch it and install the program, checking for instructions appearing on your monitor. When launching the program for the first time, you will see a window with the registration form; after you have filled it in, you will automatically get a demo account.



**After the download is complete, please double click on the setup program (m4setup.exe) and you will get a screen like this:**



**Choose your preferred language and click **Next**.**

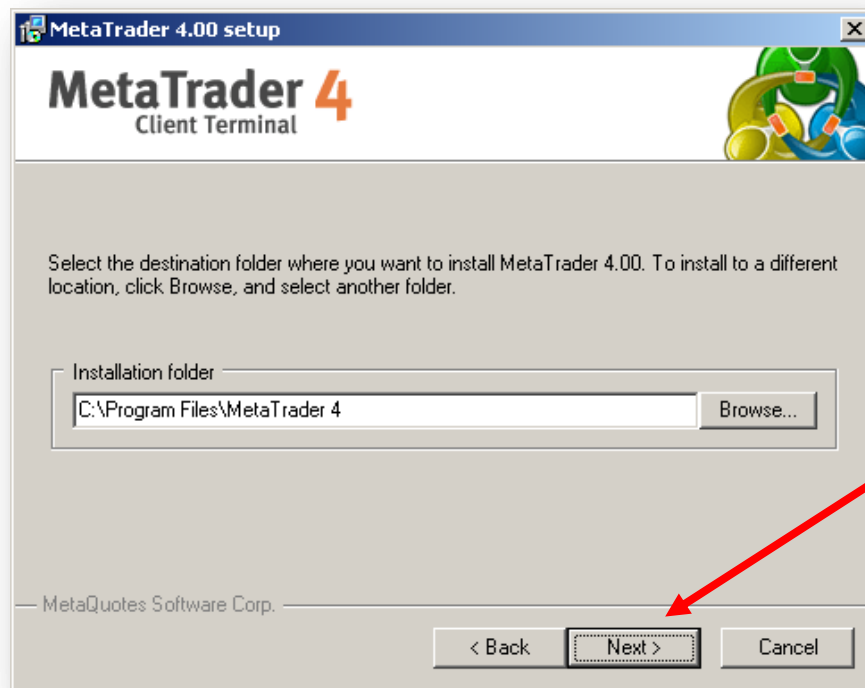


Click **Next** again to continue to User Agreement option.



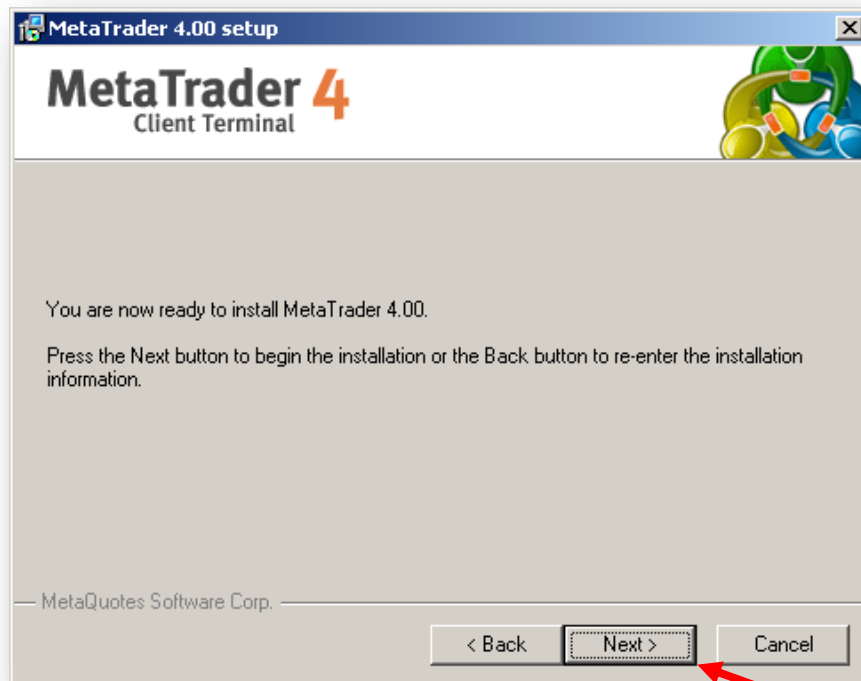
Tick the **agreement box** and continue with installation.



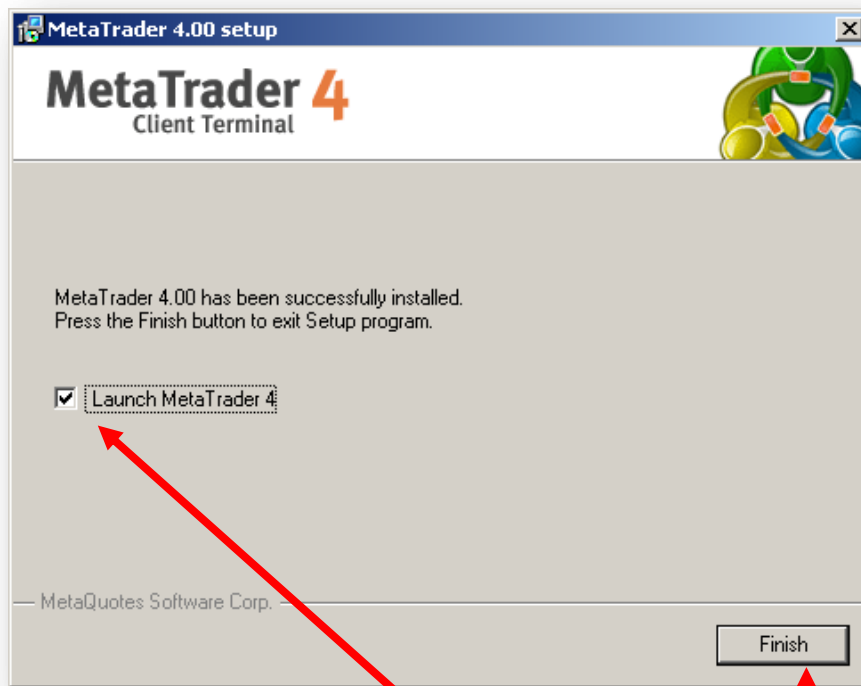


Click **Next** to continue with installation

Choose your preferred folder to install files.



**CLICK NEXT**



**If you want to launch MetaTrader, tick the box and click Finish.**

# HOW TO OPEN A DEMO ACCOUNT

When MetaTrader 4 starts up for the first time, you will need to create a “demo” account, also called a “practice” account.

When you start MetaTrader for the first time, you'll see the following window.

This is the window that enables you to open a free demo account. If you don't see this window when you open MetaTrader, choose from the **File** menu, **Open An Account**:

**Open an Account**

**Personal details**  
To open an account, please fill out all the following fields:

Name:  min 6 chars

Country:  State:  min 2 chars

City:  min 2 chars Zip code:  min 3 chars

Address:  min 6 chars

Phone:  min 6 chars Email:

Account Type:  Currency:

Leverage:  Deposit:

☒ agree to subscribe to your newsletters

< Back Next > Cancel

**Now enter your details.**

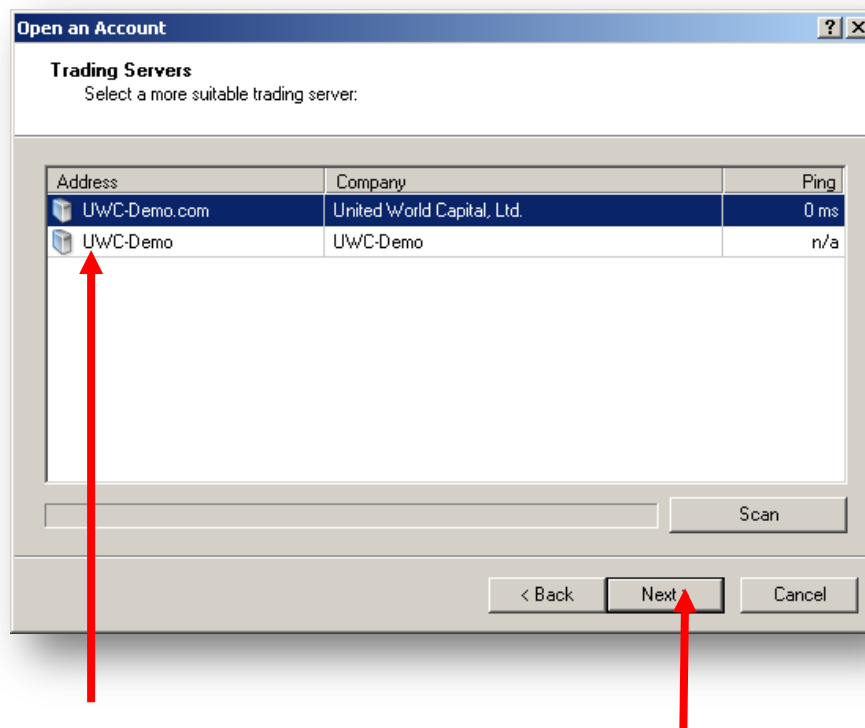
**Check the tick box and click **Next**.**

If you are considering funding a live account with an amount between \$500 and \$10,000 then the “Deposit” setting for your demo account should ideally be 10x that amount.

The reason is actually very simple: When you fund a live account with up to \$10,000, the smallest order size permitted is 0.01 lots. Demo / practice accounts usually cannot open orders smaller than 0.1 lots i.e. 10x larger on many MetaTrader versions.

This can produce vastly skewed results when comparing demo trades with live trades so, to compensate, we simply increase the demo account deposit by a factor of 10 so, for example, if you plan to open a \$5,000 live account then specify a \$50,000 demo account - the larger demo account deposit therefore provides a means of comparing systems on a more level playing field.

Click the **"I agree to subscribe to your newsletters"** box, which is mandatory if you'd like to proceed with opening the demo account. Then Click **"Next"**.



Click UWC-Demo.com and click **Next**

**Open an Account**

**Registration**  
Wait a little, please

Name: jonnyh  
Account Type: demo forex-USD (1:100)  
Deposit: 5000  
Server: UWC-Demo.com

Login: 184848  
Password: s4lbukc  
Investor: mo8ruwu (read only password)

Please keep your username and passwords in a safe place.

< Back Finish Cancel

**Remember to keep your login details in a safe place then click **Finish.****

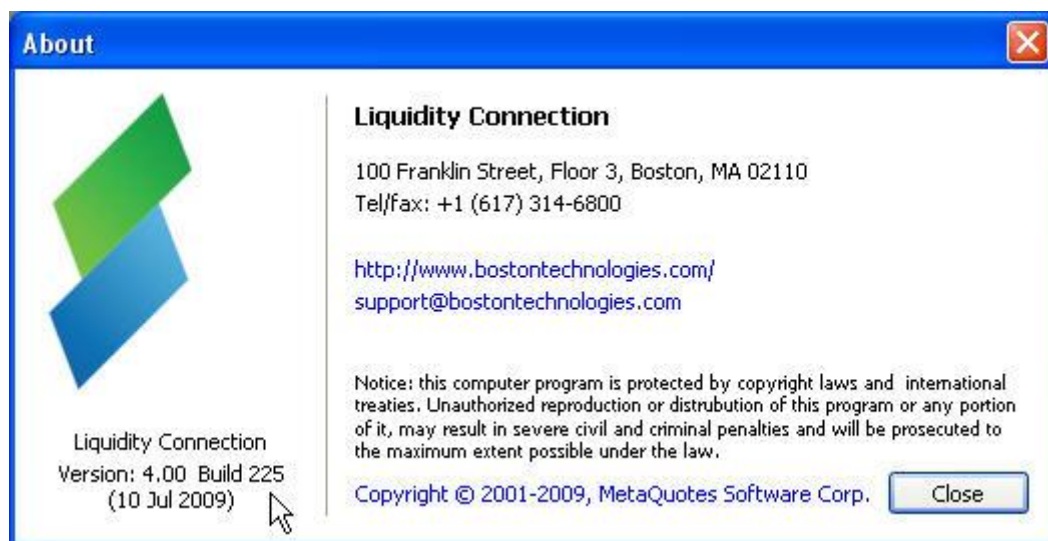
If you'd like to open a live real-money Forex account, it is important you open it with a reputable broker.

The broker I trade with and highly recommend is FXCM: they offer superior execution, highly competitive spreads and a great customer service.

# ***HOW TO INSTALL KNIGHT RIDER***

If you already have MetaTrader installed, then the first step is to ensure that you have the latest version.

To do this, click “**Help**” in the main MetaTrader 4 menu, then click “**About...**” and a window similar to this:

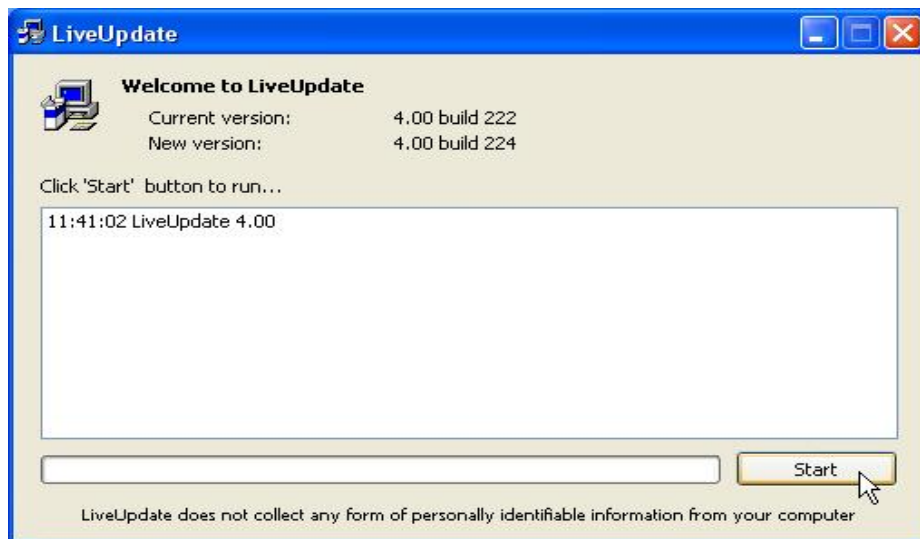


will appear showing the version and ‘build’ details plus the date it was released.

**Note:** The ***KNIGHT RIDER*** robot requires **Build 225** or higher.

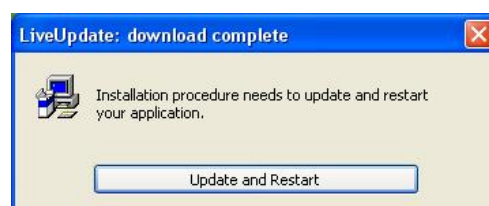
Under normal circumstances, MetaTrader 4 will automatically check for newer builds each time you start the application and will immediately offer you the opportunity of updating your version. If you find that an earlier version is installed on your computer and you are not being offered the option of updating then please call your broker for assistance.

Assuming that everything is working correctly, if you open MetaTrader and you don't have the latest build, it will immediately display a window similar to this:



Whenever you see a screen like this, click the “**Start**” button and MetaTrader 4 will update itself to the latest release. The process does not take very long and will reduce the possibility of you encountering issues with robots that you may wish to use.

Once complete, the following screen appears:



Click the “**Update and Restart**” button to launch the updated version of MetaTrader 4.

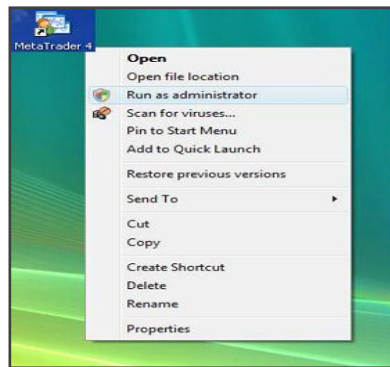


## For Windows Vista users only!

You might encounter problems with the automatic update facility of MetaTrader.

Therefore, if you are asked to update MetaTrader:

1. First close MetaTrader.
2. Right-click on the MetaTrader icon on your desktop.
3. Choose "Run As Administrator".
4. Click "Allow" if asked to allow the running of the update program.



## CONFIGURING METATRADER 4

If you have MetaTrader installed, it is recommended to go to the **Options** menu to check the settings there:

**From the Tools menu choose Options.**





In the **Options** window that opens, click the **Expert Advisors** tab.

You will see the following window.

Make sure you check all the boxes that are checked in the screen shot below.



Be sure to **UNCHECK** the boxes:

- + "Disable experts when the account has been changed"
- + "Disable experts when the profile has been changed"
- + "Ask manual confirmation" and
- + "Confirm DLL function calls".

Otherwise, the Knight Rider might not function correctly afterwards.

Click the **"OK"** button to continue.

The next stage is to install Knight Rider robot.

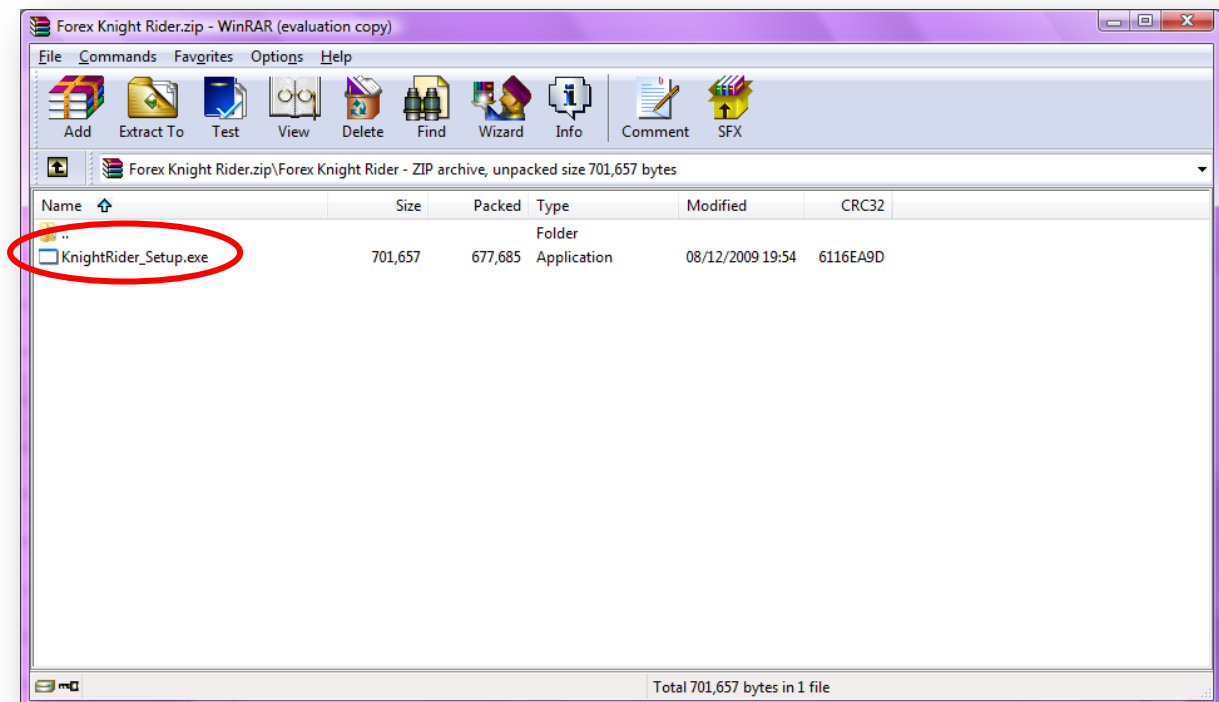
Before doing so, MetaTrader 4 should be closed down by clicking the large **"X"** button in the top-right of the application window as shown:



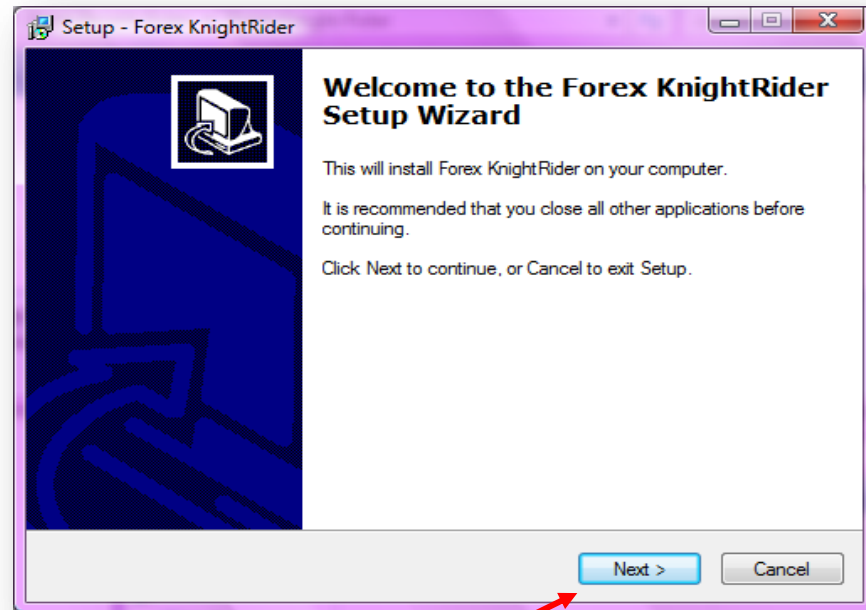
# HOW TO USE THE KNIGHT RIDER

After you completed the purchase process, you received access to the Night Rider download page.

1. From the popup menu right click and choose **Save Target As...**
2. Choose a folder on your computer to download it to. For this example, I'll choose the **My Documents** folder.
3. Navigate to the folder where you saved the Knight Rider file (in this case: C:\My Documents)
4. Navigate to the folder where you saved the Knight Rider file (in this case: C:\My Documents) and Double-click the **KnightRider.zip** file.

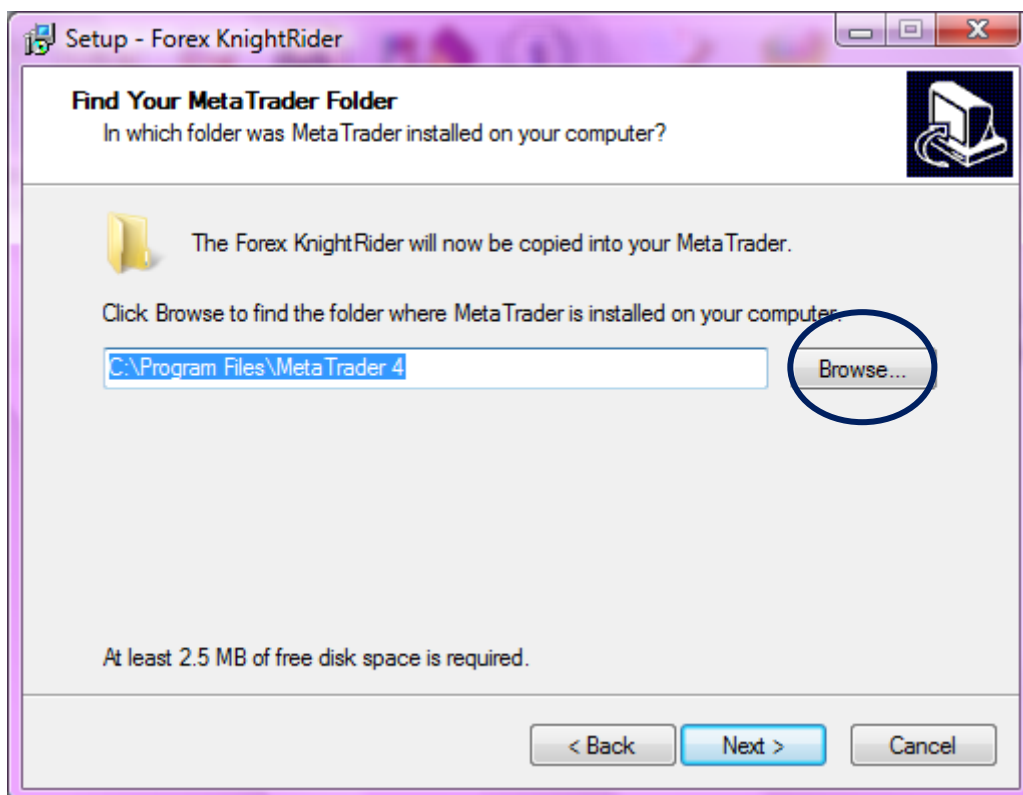


Double-click the **KnightRider\_Setup.exe** and the quick setup program will be launched:



Click the **Next** button.

You'll see the **Find Your MetaTrader** window:



Now you need to locate the folder where you installed MetaTrader on your computer.

As standard, MetaTrader is installed under the **Program Files** folder, which is usually under the C: hard drive:

### **C:\Program Files\MetaTrader Folder\**

Unless you have deliberately chosen a different location, the **Primary Path** (C:\Program Files) will always remain constant. The only variation appears in the newer 64-bit (x64) versions of Windows where older, 32-bit applications such as MetaTrader 4 are installed into the "C:\Program Files (x32)" folder.

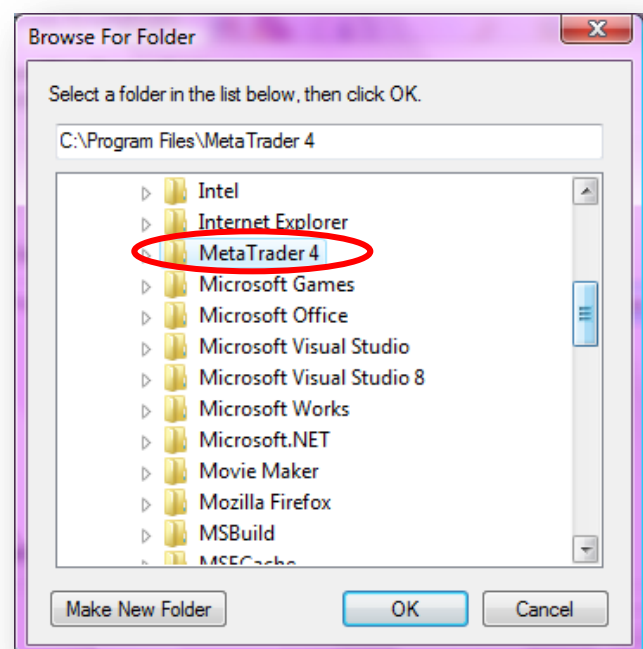
However, the **Application Folder** varies for every broker providing MetaTrader 4. But don't worry - if you are not certain where your installation is located then there's a simple way to find out:

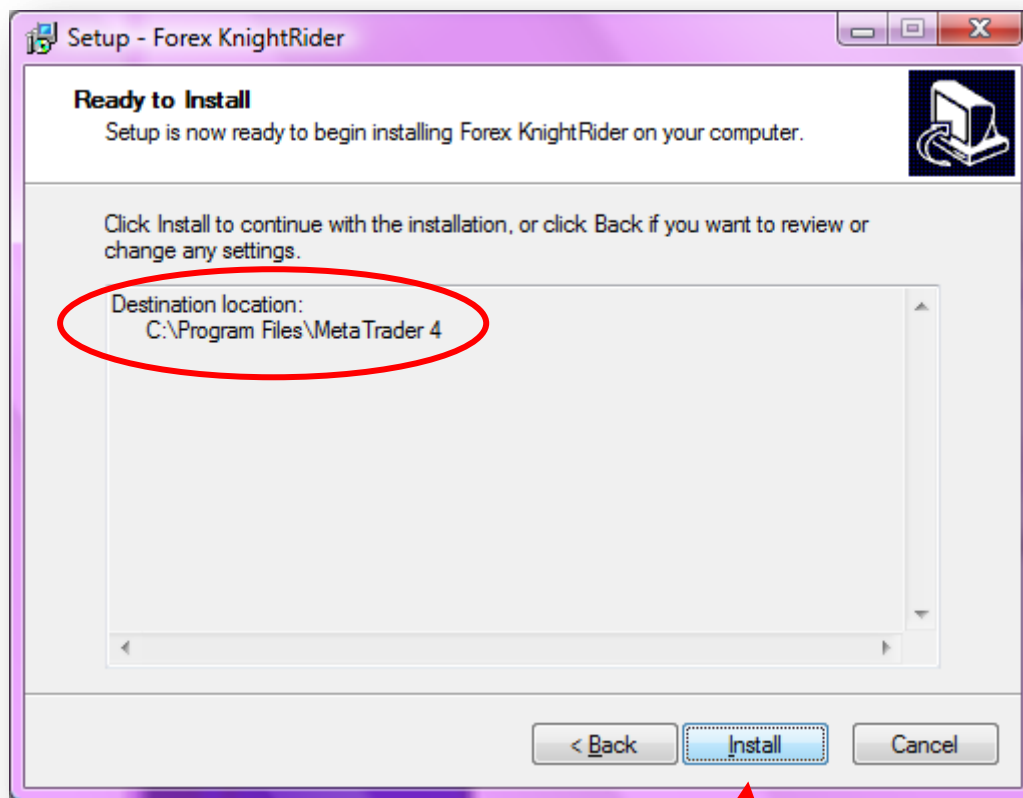
Position your mouse cursor directly over (do **not** click!) the icon on your Windows Desktop that you use to start MetaTrader 4...

click the **Browse...** button on the above screenshot circled in Blue .

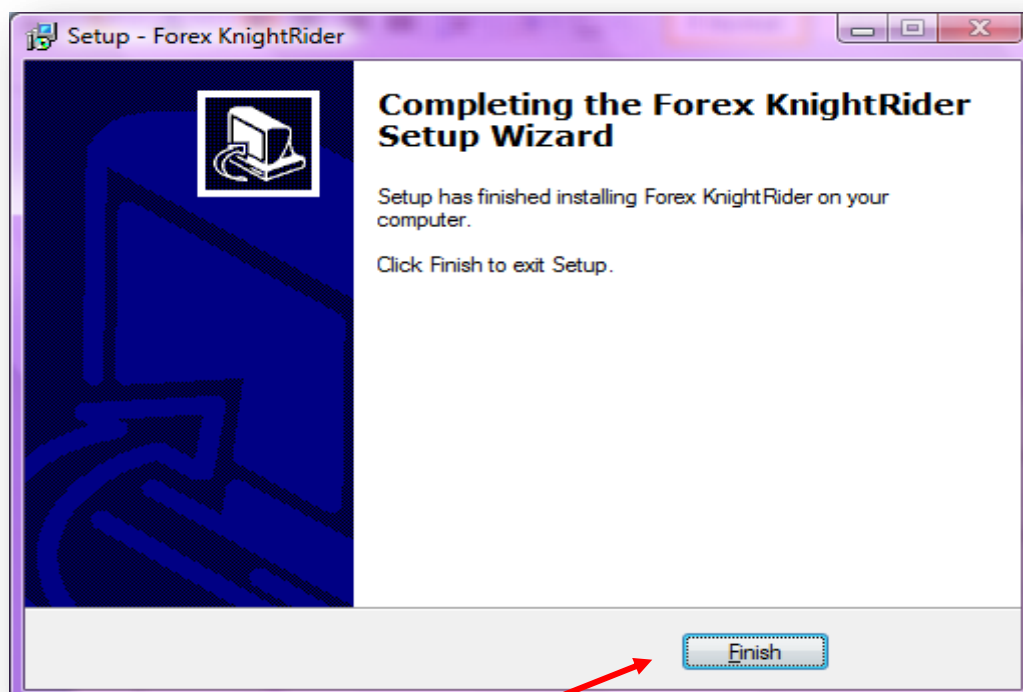
When the **Browse For Folder** window appears, double click on the correct folder name, in this case **C:** and then **Program Files**, and then: **METATRADER 4**

When the correct path appears in the top box click **OK**.



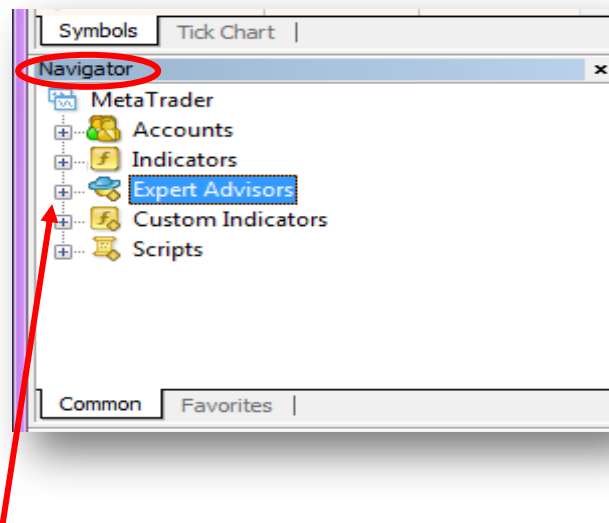


Click on the **Next** button and then on the **Install** button that appears:



When the **Finish** button appears, click it to end the setup program.

If your MetaTrader is open, close it and then re-open.  
Check the **Navigator** pane on the left side of the MetaTrader 4 window

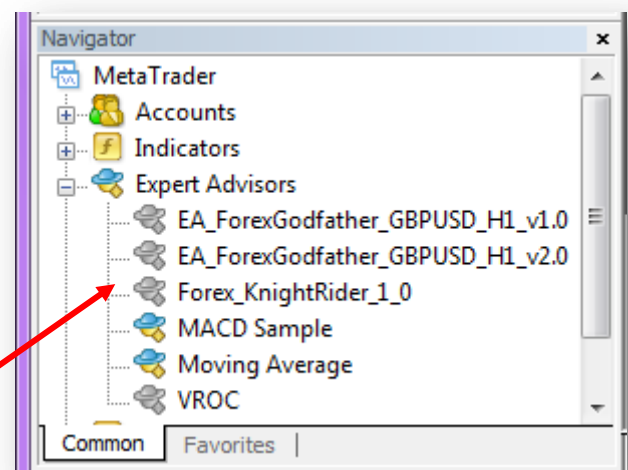


Click the small **[+]** to the left of “Expert Advisors” to expand that section to display the available Expert Advisors (robots):

If everything is correct then the list will contain the **Knight Rider** robot along with any other expert advisors that you have installed or were provided as part of the MetaTrader 4 system.

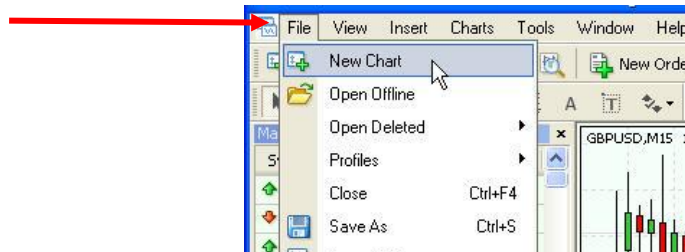
Please note that the **Knight Rider** icon is gray whilst other icons in the list are colored: **this is perfectly normal**.

A colored icon means that you have the “source code” for that particular robot i.e. the instructions that tell the expert how to trade. A grey icon means that you do not – almost all commercial experts will be **gray**.



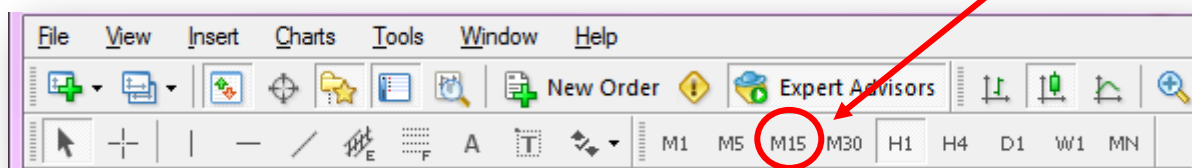
# SETTING UP FOR TRADING

To begin trading, open a new chart of the **EUR/USD** currency pair by choosing **New Chart** from the **File** menu:

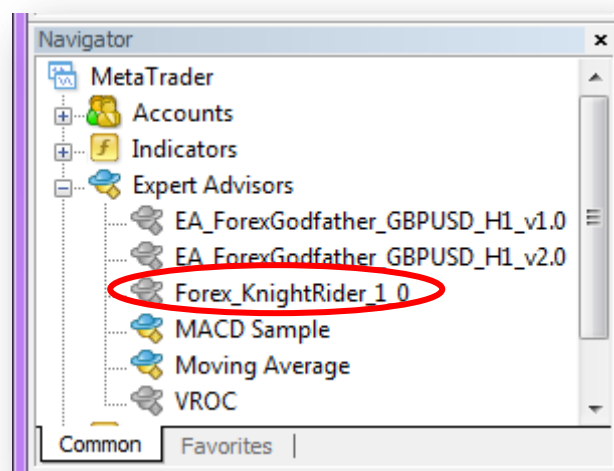


then click **EUR/USD** (depending on your broker, you may find it in another sub-menu under the **New Chart** menu, such as **Forex Crosses** or a different name).

Change the chart timeframe to 15-minutes (which is the Knight Riders natural preference), in the top toolbar click on the **M15** button:



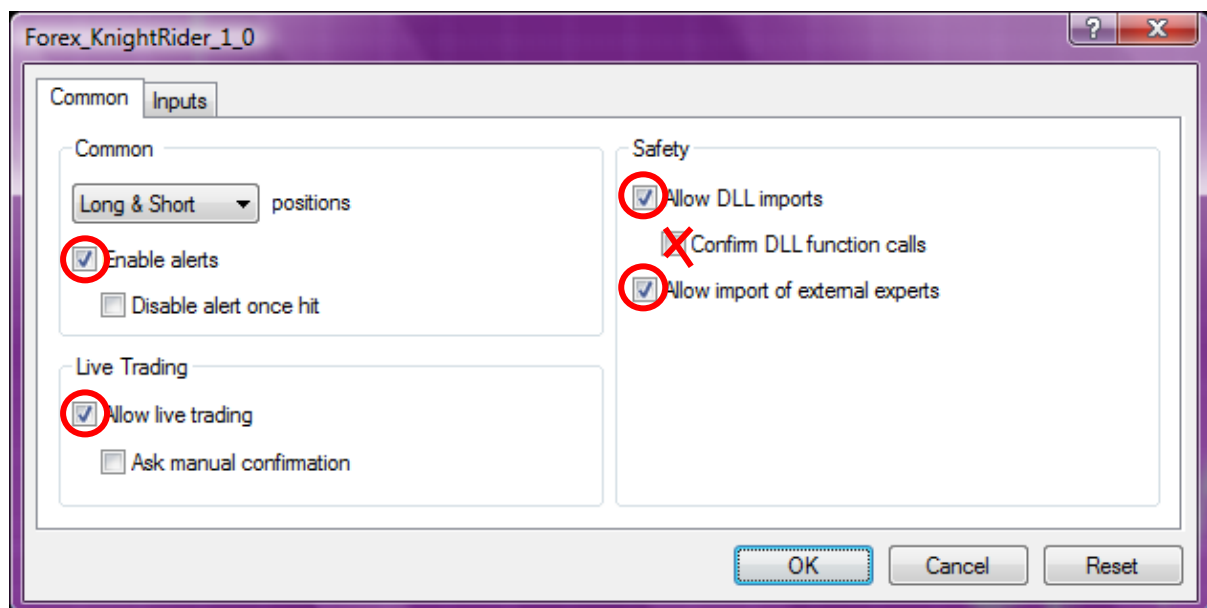
In the navigator window, double-click the **Forex\_KnightRider\_1.0**



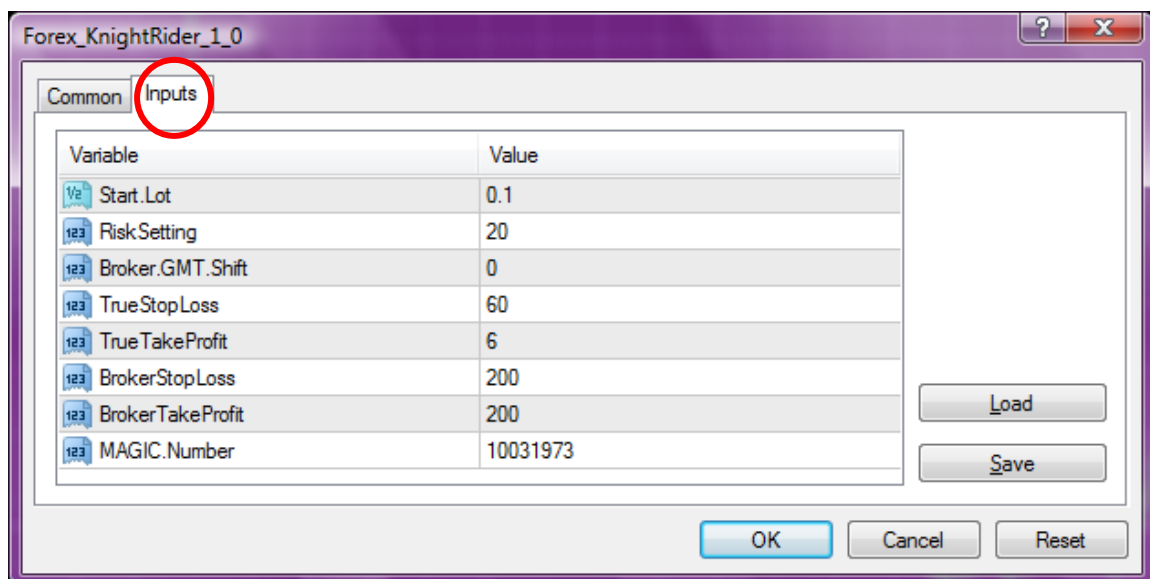
In the **Knight Rider** window that opens, click the **Common** tab to see these general options. Make sure your screen looks the same, especially the tick in the box "Allow live trading".

It is very important that **all Four** of the settings circled in red match the image above or the expert advisor will not function correctly.

Please pay special attention to the "**Confirm DLL function calls**" option which should be **unchecked**.



Click the **Inputs** tab. You'll see all the different settings, which I'll now guide you exactly how to set:





Select the Start Lot you wish to trade with.

The **Risk Setting** determines the initial trade size that the Knight Rider will enter the market. If you're not familiar with this concept, you may leave it on its default which is **20** or better still, change it to a smaller number such as 10 which will lower the risk.

Always use low Risk Setting! Remember leverage is a double-edge sword. It can increase both losses and profits.

Example: if your starting account size is 1000 and your set **Risk Setting** to 5, it will open trades of 5,000 (i.e. 0.5 minilot).

Make sure you set the correct **Broker.GMT.Shift** setting. This will enable the Knight Rider to identify the optimal times of day to trade.

This is the value you need to insert in **Broker.GMT.Shift** according to your broker:

<b>BROKER</b>	<b>BROKER.GMT VALUE</b>
InterbankFX (IBFX)	0
Alpari UK	+2
CMS UK	+1
FXCBS	+3
IamFX	+1

If your broker is not listed here, you should ask the broker what is the GMT shift, and input the value accordingly.

The reason **Broker.GMT.Shift** is important, is because Knight Riders most active during night. Therefore it needs a way to know the exact time, even when there is Daylight Savings Time. Each broker displays different times, usually according to their respective time zones.

**Do not alter the last two settings, My.Robot.ID &  
My.Robot.Magic.Number!**

Just click **OK** to apply the Knight Rider to the chart.

Your chart should look like this:



Make sure that at the top right corner of the chart, you see a smiling face like this.

If you see a sad face You've probably forgotten to tick the "Allow live trading" box in the previous steps.

In that case, in the navigator window double-click the **Knight Rider** again and click the **Inputs** tab.

If you see an **X** next to the name...



Press the large elongated toolbar button that says "Expert Advisors"

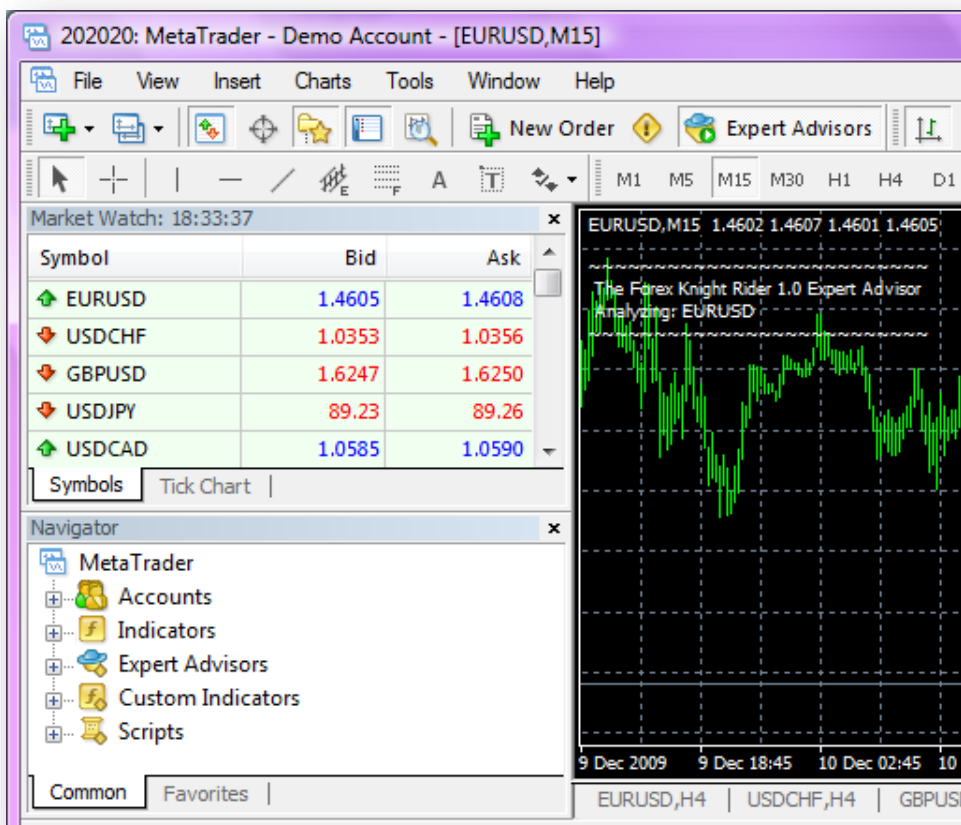
***IMPORTANT: DO NOT CHANGE THE CHART TIMEFRAME ONCE THE ROBOT IS ATTACHED.***

Your Forex Knight Rider Has **Stealth Mode**.

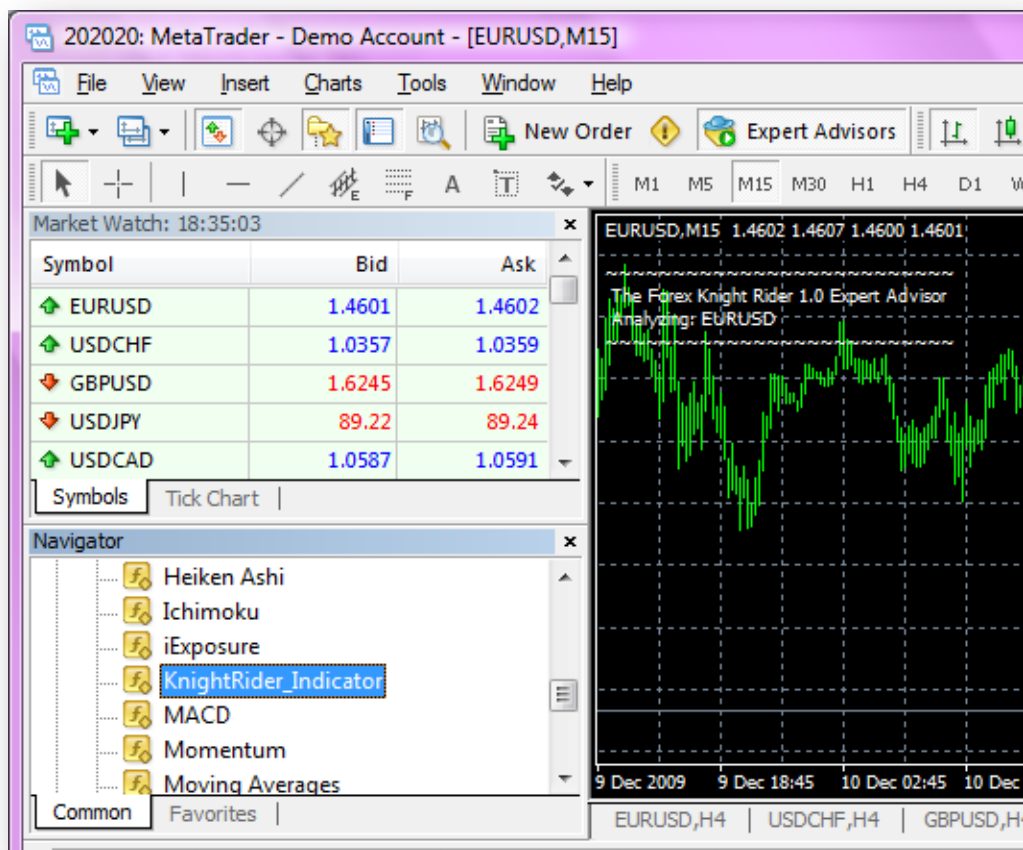
**True.Take.Profit** and **True.Stop.Loss** are the actual parameter settings that the EA will trade with but, tell your broker that it is more in the **Broker.Stop.Loss** and **Broker.Take.Profit** so that your broker can't interfere if they wanted to try anything undesirable.

These setting are set correctly but, you are free to tweak them if your comfortable doing it.

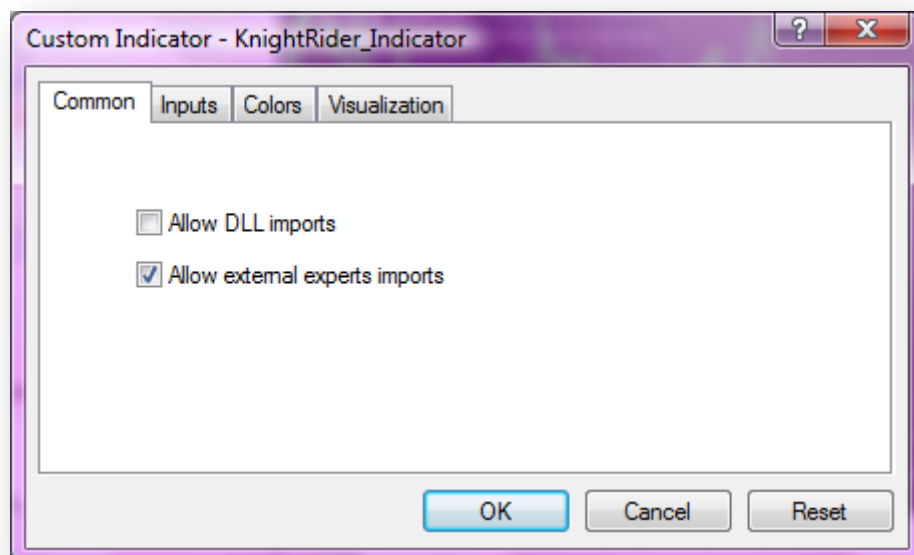
**Finally, add the indicator to the chart**



Click the **+** on the Custom Indicators



Find the **KnightRider\_Indicator** and drag it into the chart.

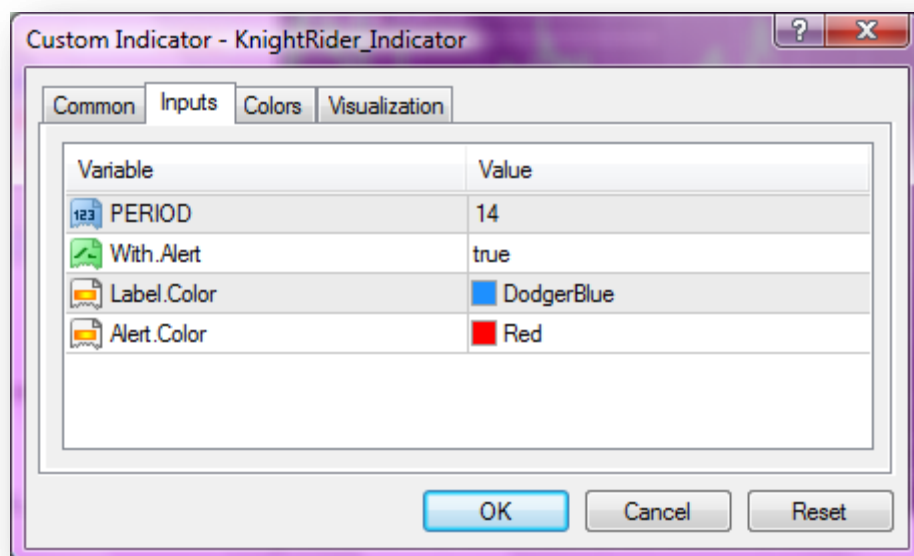


All settings are currently correct so you can click ok and your done.

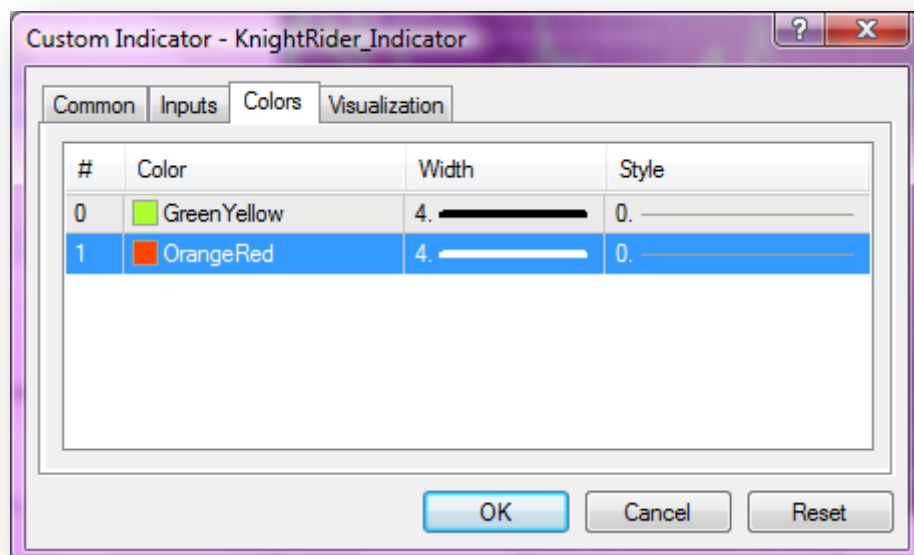
You can change options here if you wish but, we do not advise it for those of you who don't know what you are doing.

Check the following screenshots of correct settings.

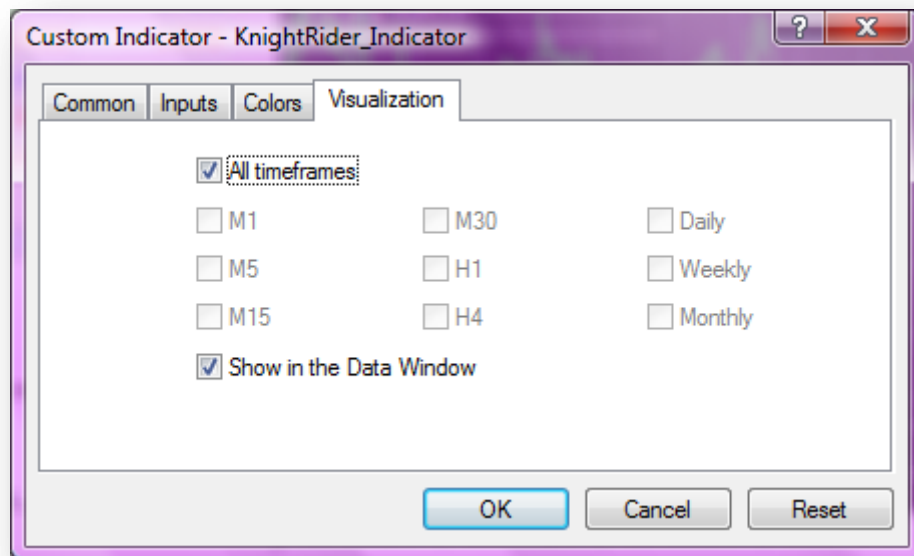
## ***INPUTS***



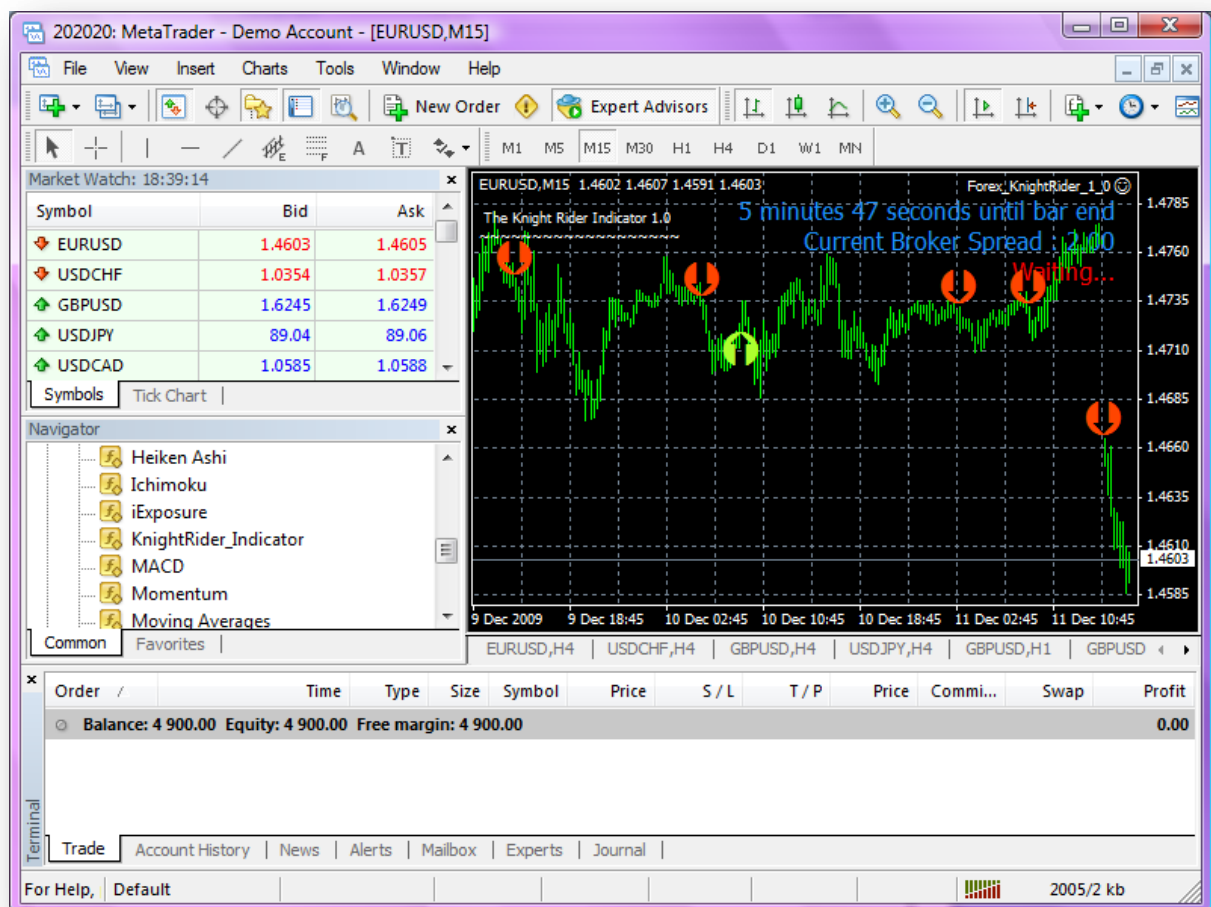
## ***COLORS***



# VISUALIZATION



## WHAT YOU SHOULD SEE WHEN IT IS COMPLETED



# ***TROUBLESHOOTING***

**Problem:** My MetaTrader crashes when I operate the Knight Rider Expert Advisor.

**Solution:** You're using an old version of MetaTrader. Updating to a new version is done automatically: when you open MetaTrader, and connect to any account (demo or live) it will open a "Live Update" window. You should allow the live update to run.

**Problem:** I can't find the Knight Rider in MetaTrader

**Solution:** The Knight Rider setup program automatically saves the Knight Rider files in the correct folders on your computer.

However, if during the installation process you didn't choose the correct MetaTrader folder than you must run the setup program again. Please watch the installation video for complete instructions:

**Problem:** I get a message "DLL not allowed"

**Solution:**

1. On your keyboard press CTRL+O or use the **Tools -> Options** menu to access the **Options** window. See screen shot below.
2. Click the "**Expert Advisors**" tab.
3. Make sure your Options windows looks exactly the same as this one, with several of the boxes are ticked, while others (the inner indented options) are NOT ticked:



**Problem:** The Knight Rider is running but no trades are being opened.

**Solution:** It is normal not to have a trade in a certain day. The robot looks for a good opportunity to enter the market. If it doesn't spot a good enough opportunity to prey upon, it wouldn't jump in.

Remember, the goal is to trade as profitably as possible, not as often as possible!

Also, don't forget that the Forex market is closed on Saturday and Sunday. By the way, it's not necessary to turn off the Knight Rider during the weekend.

However, if more than 3 days passed with no trade:

- Verify that the robot is indeed working (smiley face at the top right corner of the chart).
- If everything looks ok and still no trade, please contact our support team which will be happy to assist you: [support@ForexKnightrider.com](mailto:support@ForexKnightrider.com)

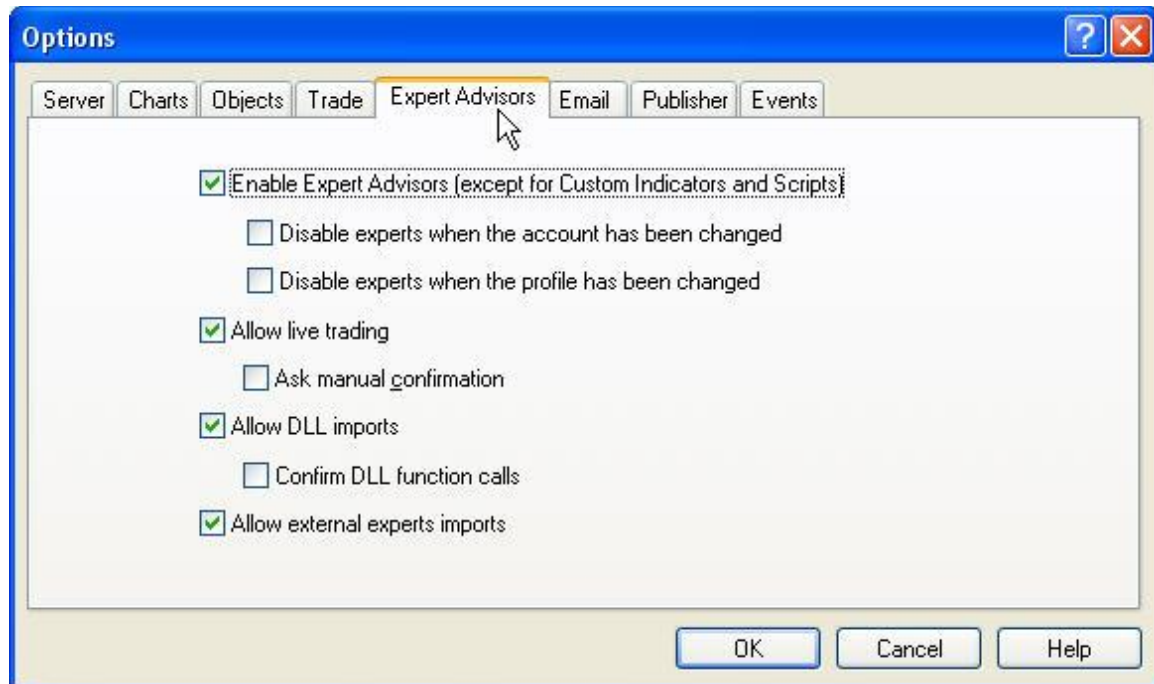
**Problem:** I try to run a back test of the EA and it doesn't work.

**Solution:** Have you downloaded enough historical data? On your keyboard press the F2 key to access the data download window.



Another possible problem arises when you forget to "Allow DLLs" in the MetaTrader options:

4. On your keyboard press CTRL+O or use the **Tools -> Options** menu to access the **Options** window. See screen shot below.
5. Click the "**Expert Advisors**" tab.
6. Make sure your Options windows looks exactly the same as this one, with several of the boxes are ticked, while others (the inner indented options) are NOT ticked:



**Problem:** What should I do if my computer rebooted or lost power?

**Solution:** Just run MetaTrader again and make sure the Knight Rider is turned on (as explained in page 30). The Knight Rider will continue trading where it left off.

If you have troubles with having the computer constantly open and connected to the internet, there is a low-cost solution using a VPS (Virtual Private Server).

**Problem:** Where is the folder of MetaTrader experts? I can't find it on my computer!

**Solution:** As standard, MetaTrader is installed under the Program Files folder, which is usually under the C: hard drive:

**C:\Program Files\MetaTrader Folder\**

**Primary Path**

**Application Folder**

Unless you have deliberately chosen a different location, the **Primary Path**

(C:\Program Files) will always remain constant. The only variation appears in the newer 64-bit (x64) versions of Windows where older, 32-bit applications such as MetaTrader 4 are installed into the "C:\Program Files (x32)" folder.

However, the **Application Folder** varies for every broker providing MetaTrader 4. But don't worry - if you are not certain where your installation is located then there's a simple way to find out:

Position your mouse cursor directly over (do **not** click!) the icon on your Windows Desktop that you use to start MetaTrader 4...

# ***FREQUENTLY ASKED QUESTIONS (FAQ)***

## **What is a Forex robot (Expert Advisor) ?**

An Expert Advisor is computer software that's written in the MQ4 language, works in the Metatrader4 trading platform and trades for you automatically!

## **What is Metatrader4 and where can I download it?**

Metatrader4 is a free trading platform. You can download it from your broker's website.

## **What broker should I use?**

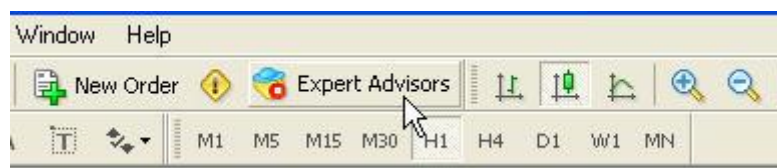
The Knight Rider works on the popular Metatrader 4 platform. You can use any broker you like that offers the MetaTrader platform (there are hundreds of them) its also compatible with ECN Brokers

## **I have MAC OS. Can Metatrader4 work on MAC?**

Metatrader4 was originally created for Windows only. If you're a Mac user the best solution would be to have it installed on a VPS (Virtual Private Server) hosting service.

## **Turning the robot on and off**

If for any reason you need to turn off the Knight Rider, you can do so by clicking the "Expert Advisors" button on the top toolbar:



When this button has a white background, it means that Expert Advisors are active and able to open, close or modify trades.

## **Should I use a demo or real account?**

You should operate the Expert Advisor on a demo account only, until you're sure that it is compatible with your chosen broker, and you're sure about risking real money. And even then, never risk money that you can't afford to lose or don't want to lose.

Always remember that leverage is a double-edge sword: it can increase both profits and losses. Using excessive leverage might cause you to lose your entire account. **Use only low leverage** to avoid getting into trouble.

## **What settings should I use?**

The Knight Rider comes with default settings which are optimal for current market conditions.

If you feel confident enough to tweak the default settings, use the Night Riders' **Inputs** tab as explained in setting up for trading section of the manual

## **Currency Pairs to Use**

The Knight Rider currently works best with **EUR/USD** on the M15 (15-minutes) time frame.

## **How much money do I need to start trading?**

You can start with relatively small account sizes such as \$500 USD. However, remember that starting out with low trading capital may put you at disadvantage because you will only be able to trade the market in small trade sizes. It's best to start with capital of \$1,000-5,000 USD or train on a Demo account till you are satisfied with the performance.

## **Can I have several robots running on the same account?**

Yes you can. The Knight Rider uses a unique trade identifier called "MagicNumber". This is a unique identifier number attached to each trade it opens. The Knight Rider will only manage and close the trades that carry this unique identifier. If you have other robots running on the same account as the Knight Rider you need to make sure they also use a MagicNumber of their own. Otherwise they might interfere with the Knight Riders' trading. The Knight Rider itself is smart enough not to interfere with other robots' trades!

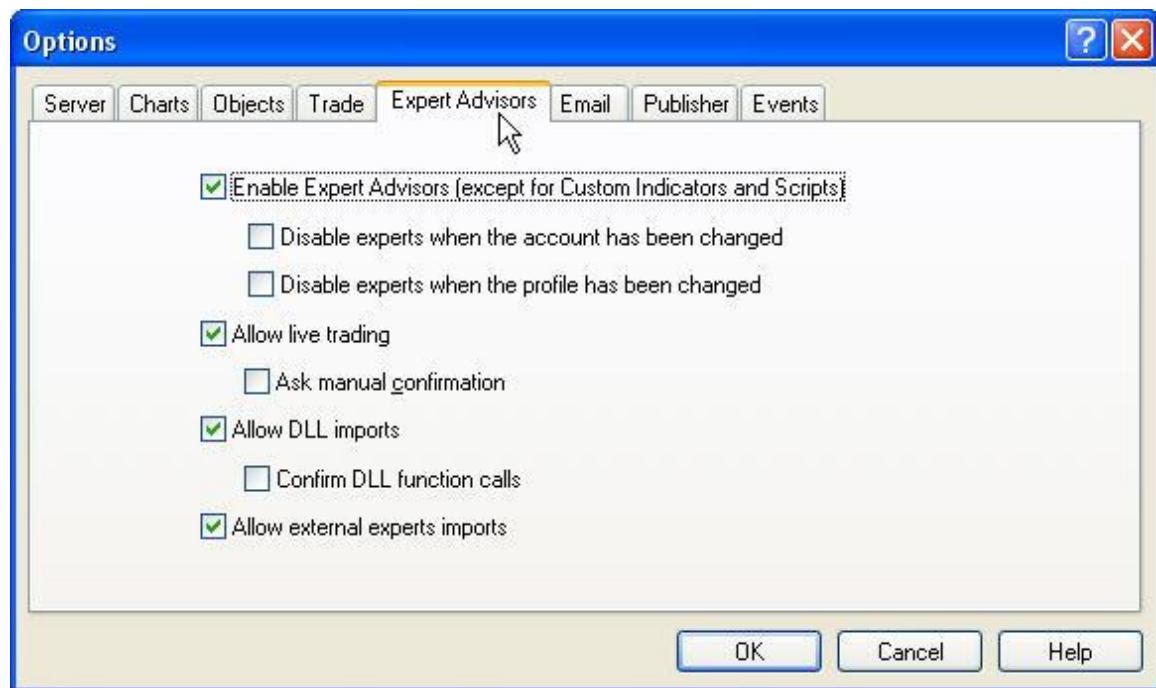
You're advised to also check the other robot's user guide, and to run everything on a demo account to monitor the behaviour of all robots together.

### Can I back test the robot on historical data?

Sure. Backtest also allows you to try different parameters and see what worked best in the past. Past results are not indicative of future results (see disclaimer).

When you're backtesting using the **Strategy Tester** built inside MetaTrader (View -> Strategy Tester) make sure you do the following:

1. Choose from the **Tools** menu -> **Options**, click the **Expert Advisors** tab and make sure **Allow DLL imports** is ticked. Generally, your **Options** should look like this:



2. To open the MetaTrader Strategy Tester, choose from the **View** menu -> **Strategy Tester**.
3. Choose the Knight Rider expert advisor, the EUR/USD symbol and M15 period. You can also specify the dates to check.
4. Click the **Expert properties** button, and click the **Inputs** tab:

- 5.** In the **Value** box next to **GMT**, input your broker's GMT shift. If you don't know what is it, please contact your broker and ask the question: "what is your GMT shift?".
- 6.** Click **OK** to close this window, and click the **Start** button to start the backtest.

### **How do I optimize the settings?**

If you're an advanced user, you can use optimization to search for different parameters than the default ones. The Knight Rider enables optimization of its parameters using the "Strategy Tester" window.

See MetaTrader's help for further details.

### **Does my computer need to be working all the time?**

Yes. For the Knight Riders' correct operation the following three conditions must be met:

1. Your computer is constantly on.
2. MetaTrader software is always working.
3. You have a constant connection to the Internet.

For example, when you have an open trade the Expert Advisor needs to constantly manage it (modify stop loss levels, close a trade, etc.).

If you're not able to maintain constant connection to the internet, you should use a VPS (Virtual Private Server) service.

### **Do I need to watch the Knight Rider when it is working?**

No, the robot frees you from the need to be glued to your screen 24/7 to look for trading opportunities. Everything is done automatically for you!

You just need to be sure that MetaTrader stays open all the time and connected to the internet.

### **What should I do if my computer rebooted or lost power?**

Just run MetaTrader again and make sure the Knight Rider is turned on (as explained in page 31). The Knight Rider will continue trading where it left off.

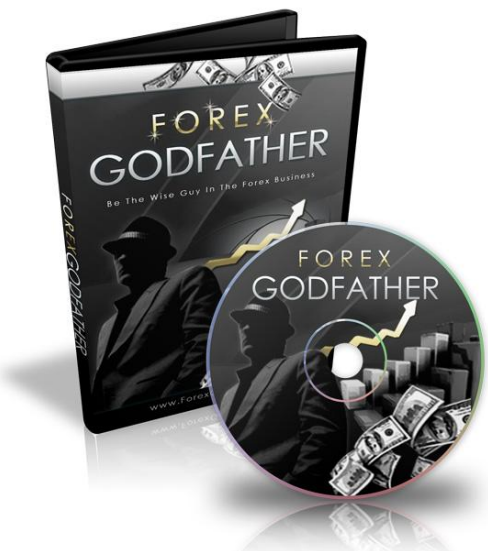
If you have troubles with having the computer constantly open and connected to the internet, there is a low-cost solution using a VPS (Virtual Private Server).

**The files are in zip format. Where can I get WinZip or other programs to unzip files?**

You can use the free WindowsXP/Vista zip service. You can also use free WinRAR to unzip files: <http://www.rarlab.com/>



**RELEASE DATE:**  
**12/15/2009**



**OUT NOW!**

**[WWW.NEXTGENERATIONFXTRADING.COM](http://WWW.NEXTGENERATIONFXTRADING.COM)**